

1 0 1 0 2
3 0 0 4
a-L-b (+)

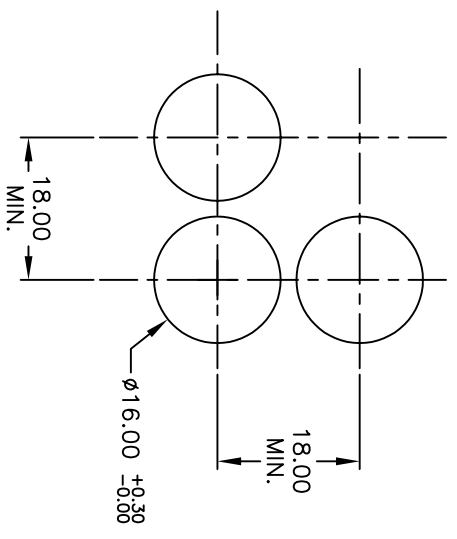
PARTS LIST

ITEM	QTY.	PART NO.	PART DESCRIPTION
1	1	F040008	D16 OA S1 1
2	1	F050406	50-004-06 (Incandescent bulb)
3	1	F052304	50-003-04 (OPAQUE RED lens)

SPST
CONTACT CONFIGURATION

NOTES:

1. ALL DIMENSIONS IN MM
2. GENERAL TOLERANCE: X.X=±0.4
X.XX=±0.25
3. RATINGS: 5A @250V AC
8A @125V AC
4. CONTACT MATERIAL:
COPPER ALLOY W/Silver Plating
5. LAMP VOLTAGE: 48V AC/DC 25ma



REV.	ECN No.	DESCRIPTION	DATE	CHKD
A	12160	RELEASED FOR PRODUCTION	5/21/02	CJB

THE INFORMATION CONTAINED IN THIS DOCUMENT IS PROPRIETARY TO E-SWITCH AND IS NOT TO BE COPIED OR TRANSFERRED

TITLE	SCALE	DATE	DR	DWG	REV
D16 DA S11 D RED (Momentary) OPAQUE/CONCAVE LENS	1.5:1	5/21/02	CB	XF0460P	A